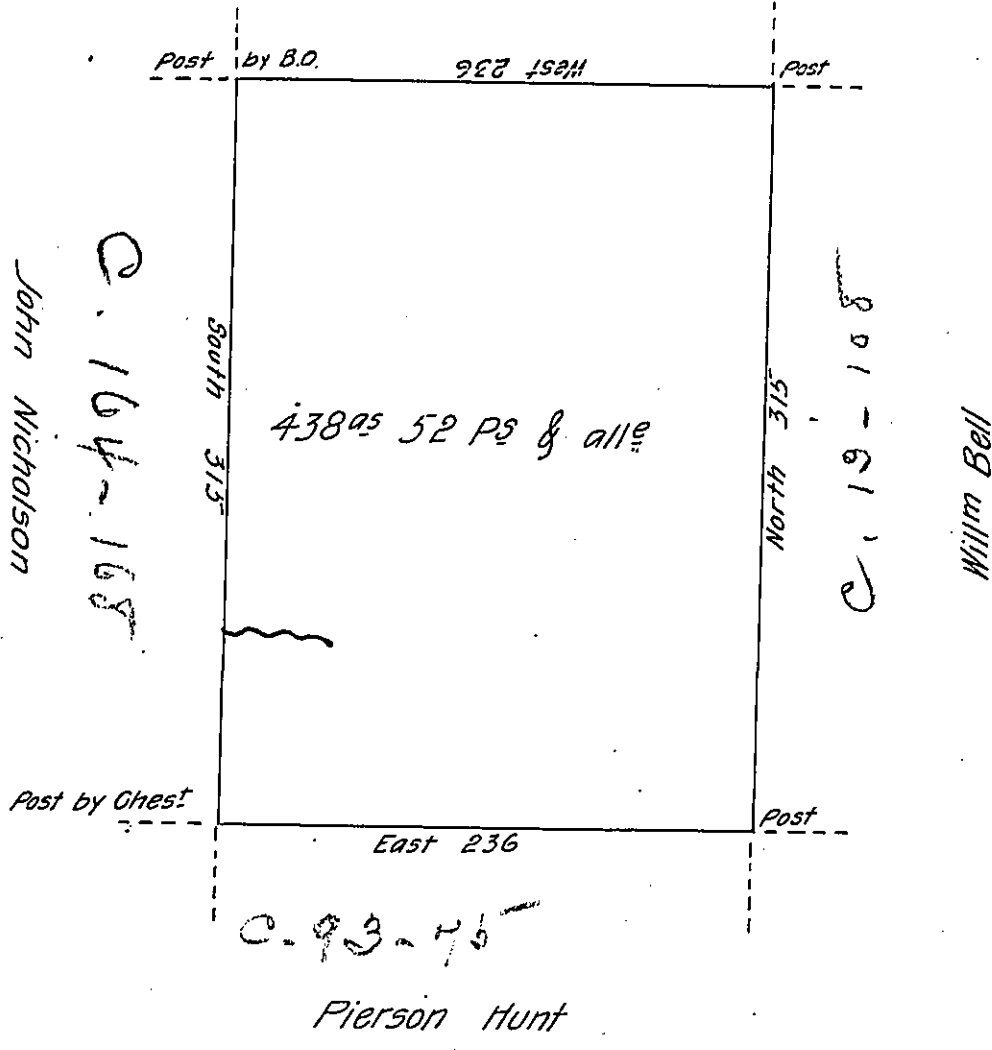


John Irwin



Situate North of the Bald Eagle Path in Stewarts Valley Huntingdon County. Containing four hundred and thirty eight acres fifty two perches and allow^e of six P. Cent for Roads &c. Survey'd 9 October 1792 to Matthew Irwin on his Warrant dated 27 July 1792.

John Canan D. S.

Dan^t Brodhead Esq^r
Surv^r Gen^t

IN TESTIMONY that the above is a copy of the original remaining on file in the Department of Internal Affairs of Pennsylvania, made conformably to an Act of Assembly approved the 16th day of February, 1833, I have hereunto set my Hand and caused the Seal of said Department to be affixed at Harrisburg, this thirtieth day of June 1905.

Grace R. Brown
Secretary of Internal Affairs.